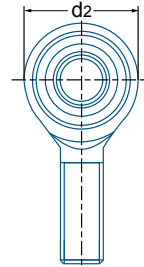


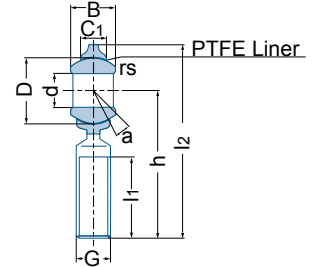
## SMR\_T & SML\_T Series



SMR 8T



SMR(L)\_T



Unit No.		Dimensions (in) Dimensions (mm)											Load Ratings lbf / N		Mass	
Right-hand	Left-hand	d	B	D	C1	d2	G	h1	l1	l2	rs	a	dynamic Cr	static C0r	kg	lbs
SMR 3T	SML 3T	0,190 4,83	0,312 7,92	0,437 11,10	0,234 5,94	0,625 15,88	10-32	1,250 31,75	0,750 19,05	1,563 39,70	0,012 0,30	10,0	611 2720	641 2850	0,014	0,031
SMR 4T	SML 4T	0,250 6,35	0,375 9,53	0,500 12,70	0,250 6,35	0,750 19,05	1/4-28	1,562 39,67	1,000 25,40	1,937 49,20	0,012 0,30	13,5	810 3600	1113 4950	0,018	0,040
SMR 5T	SML 5T	0,313 7,95	0,437 11,10	0,625 15,88	0,312 7,92	0,875 22,23	5/16-24	1,875 47,63	1,250 31,75	2,312 58,72	0,012 0,30	11,0	1241 5520	1416 6300	0,032	0,070
SMR 6T	SML 6T	0,375 9,53	0,500 12,70	0,719 18,26	0,359 9,12	1,000 25,40	3/8-24	1,938 49,23	1,250 31,75	2,438 61,93	0,024 0,61	11,0	1690 7520	16686 7500	0,050	0,110
SMR 7T	SML 7T	0,438 11,13	0,562 14,27	0,812 20,62	0,406 10,31	1,125 28,58	7/16-20	2,125 53,98	1,375 34,93	2,688 68,28	0,024 0,61	10,5	1978 8800	2192 9750	0,068	0,150
SMR 8T	SML 8T	0,500 12,70	0,625 15,88	0,937 23,80	0,453 11,51	1,312 33,32	1/4-20	2,438 61,93	1,500 38,10	3,094 78,59	0,024 0,61	10,0	2698 12000	3203 14250	0,110	0,242
SMR 10T	SML 10T	0,625 15,88	0,75 19,05	1,125 28,58	0,484 12,29	1,500 38,10	5/8-18	2,625 66,68	1,625 41,28	3,375 85,73	0,024 0,61	13,0	3597 16000	3541 15750	0,160	0,352
SMR 12T	SML 12T	0,750 19,05	0,875 22,23	1,312 33,32	0,593 15,06	1,750 44,45	3/4-16	2,875 73,03	1,75 44,45	3,75 95,25	0,024 0,61	12,0	5215 23200	4889 21750	0,260	0,572
SMR 16T	SML 16T	1,000 25,40	1,375 34,93	1,875 47,63	1,000 25,40	2,750 69,85	1-1/4-12	4,125 104,78	2,125 53,98	5,500 139,70	0,024 0,61	14,0	10791 48000	17030 75750	0,986	2,169

Other sizes could be available upon request. Minimum quantity may apply.