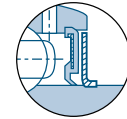
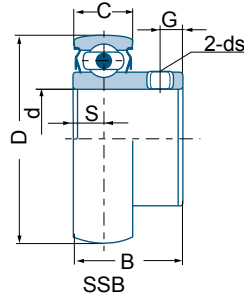




SSB 205-16



Dual Seals

Unit No.	Shaft Dia. d		Dimensions (in) Dimensions (mm)						Basic load rating lbf / N		Mass											
	in	mm	D	B	C	S	G	ds	dynamic	static	kg	lbs										
									Cr	C0r												
SSB 201	1/2	12	1,5748	0,866	0,472	0,236	0,177	1/4-28	2304	1113	0,10	0,22										
201-8											0,09	0,20										
202		15										0,08	0,18									
SSB 202-10	5/8	17	40	22	12	6	4,5	M6 X 1	10248	4950	0,08	0,18										
203												0,08	0,18									
SSB 204-12	3/4	20	1,8504	0,984	0,551	0,275	0,177	1/4-28	2304	1113	0,13	0,29										
204												47	25	14	7	4,5	M6 X 1	10248	4950	0,12	0,26	
SSB 205-14	7/8	25	2,0472	1,062	0,591	0,295	0,217	1/4-28	2522	1324	0,18	0,40										
205-15											15/16		0,17	0,37								
205													52	27	15	7,5	5,5	M6 X 1	11216	5888	0,17	0,37
205-16											1										0,16	0,35
SSB 206-17	1-1/16	30	2,4409	1,181	0,630	0,315	0,217	1/4-28	4375	2542	0,28	0,62										
206-18											1-1/8		0,26	0,57								
206													62	30	16	8	5,5	M6 X 1	19460	11306	0,25	0,55
206-19											1-3/16										0,25	0,55
206-20											1-1/4										0,24	0,53

Other sizes could be available upon request. Minimum quantity may apply.
Please refer to page 45 for setscrew maximum torque informations.