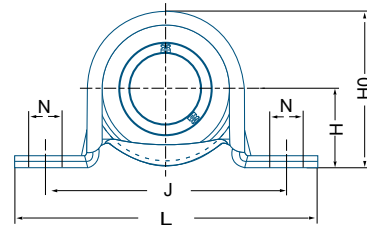


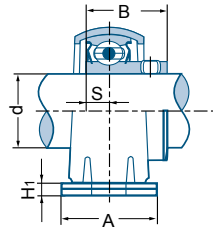
SSBSPP Series



SSBSPP 204-12



SSBSPP



Unit No.	Shaft Dia. d		Dimensions (in)									Bolt Size	Bearing No.	Housing No.	Mass	
	in	mm	H	L	J	A	N	H1	H0	B	S				kg	lbs
SSBSPP 201	1/2	12	7/8	3-3/8	2-11/16	31/32	3/8	0,126	1-23/32	0,8661	0,236	5/16	SSB 201	SPP 203	0,2	0,2
201-8																
202																
202-10																
203	5/8	15	22,2	86	68,3	25	9,5	3,2	43,8	22	6	M8	202-10	203		
203	17															
SSBSPP 204-12	3/4	20	1	3-27/32	3	1-1/4	3/8	0,126	2	0,9843	0,276	5/16	SSB 204-12	SPP 204	0,4	0,2
204			25,4	98	76,2	32	9,5	3,2	50,5	25	7					
SSBSPP 205-14	15/16	7/8	1-1/8	4-1/4	3-3/8	1-1/4	7/16	0,157	2-7/32	1,0630	0,295	3/8	SSB 205-14	SPP 205	0,7	0,3
205-15																
205																
205-16																
205-16	1	25	28,6	108	85,7	32	11,5	4,0	56,6	27	7,5	M10	205	205-16		

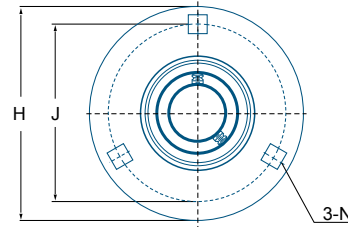
Other sizes could be available upon request. Minimum quantity may apply.
Please refer to page 45 for setscrew maximum torque informations.

Pressed Stainless Steel Housing Round Flange Units

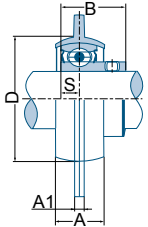
SSBSPF Series



SSBSPF 205-16



SSBSPF



Unit No.	Shaft Dia. d		Dimensions (in)								Bolt Size	Bearing No.	Housing No.	Mass	
	in	mm	H	J	A1	N	A	B	S	D min.				kg	lbs
SSBSPF 201	1/2	12	3-3/16	2-1/2	0,157	9/32	9/16	0,8661	0,236	1-59/64	1/4	SSB 201	PF 203 SS	0,2	0,4
201-8															
202															
202-10															
203	5/8	15	81,0	63,5	4	7,1	14	22,0	6	49	M6	202-10	203		
203	17														
SSBSPF 204-12	3/4	20	3-35/64	2-13/16	0,157	23/64	5/8	0,9843	0,276	2-13/64	5/16	SSB 204-12	PF 204 SS	0,3	0,7
204			90,1	71,4	4	9	16	25,0	7	56					
SSBSPF 205-14	15/16	7/8	3-3/4	3	0,157	23/64	23/32	1,0630	0,295	2-23/64	5/16	SSB 205-14	PF 205 SS	0,3	0,7
205-15															
205															
205-16															
205-16	1	25	95,3	76,2	4	9	18	27,0	7,5	60	M8	205	205-16		

Other sizes could be available upon request. Minimum quantity may apply.
Please refer to page 45 for setscrew maximum torque informations.