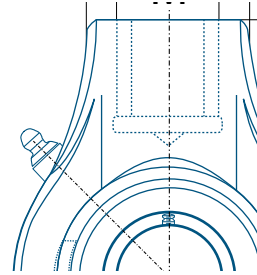
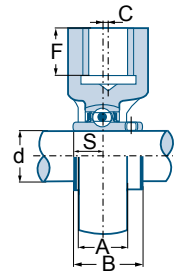




SSUCHA 205-15



SSUCHA



Unit No.	Shaft Dia.		Dimensions (in)										Bearing No.	Housing No.	Mass		
	d		Dimensions (mm)												kg	lbs	
	in	mm	L	H0	C	A	H	M	D	F	B	S					
SSUCHA 201		12												SUC 201			
201-8	1/2													201-8			
202		15	2-17/32	3-25/32	0	13/16	2-33/64		1-9/16	3/4	1,2205	0,500		202	SHA 204	0,7	1,5
202-10	5/8							Rp 3/4						202-10			
203		17												203			
204-12	3/4		64	96	0	21	64		40	19	31,0	12,7		204-12			
204		20												204			
SSUCHA 205-14	7/8		3-1/16	4-1/16	0	15/16	2-33/64		1-9/16	3/4	1,3425	0,563		SUC 205-14	SHA 205	1,0	2,2
205-15	15/16							Rp 3/4						205-15			
205		25	78	103	0	24	64		40	19	34,1	14,3		205			
205-16	1													205-16			
SSUCHA 206-18	1-1/8		3-1/16	4-1/16	0	1-3/32	2-33/64		1-9/16	3/4	1,5000	0,626		SUC 206-18	SHA 206	1,0	2,2
206		30						Rp 3/4						206			
206-19	1-3/16		78	103	0	28	64		40	19	38,1	15,9		206-19			
206-20	1-1/4													206-20			
SSUCHA 207-20	1-1/4		3-5/8	4-9/16	0	1-3/16	2-3/4		1-9/16	3/4	1,6890	0,689		SUC 207-20	SHA 207	1,4	3,1
207-21	1-5/16							Rp 3/4						207-21			
207-22	1-3/8													207-22			
207		35	92	116	0	30	70		40	19	42,9	17,5		207			
207-23	1-7/16													207-23			
SSUCHA 208-24	1-1/2		3-25/32	4-3/4	3/32	1-5/16	2-7/8		1-9/16	3/4	1,9370	0,748		SUC 208-24	SHA 208	1,5	3,3
208-25	1-9/16							Rp 3/4						208-25			
208		40	96	121	2	33	73		40	19	49,2	19,0		208			
SSUCHA 209-26	1-5/8		4-1/4	5-11/32	3/16	1-3/8	3-15/64		1-7/8	13/16	1,9370	0,748		SUC 209-26	SHA 209	2,1	4,6
209-27	1-11/16							Rp 1						209-27			
209-28	1-3/4		108	136	5	35	82		48	21	49,2	19,0		209-28			
209		45												209			
SSUCHA 210-30	1-7/8		4-21/32	5-19/32	3/16	1-15/32	3-17/64		1-7/8	13/16	2,0315	0,748		SUC 210-30	SHA 210	2,6	5,7
210-31	1-15/16							Rp 1						210-31			
210		50	118	142	5	37	83		48	21	51,6	19,0		210			
210-32	2													210-32			

Other sizes could be available upon request. Minimum quantity may apply.
Please refer to page 45 for setscrew maximum torque informations.

Designation of Thread	Dimensions (mm)		
	Major Diameter of Internal Thread	Pitch Diameter	Minor Diameter of Internal Thread
Rp 3/4 (PS 3/4)	26,441	25,279	24,117
Rp 1 (PS1)	33,249	31,770	30,291