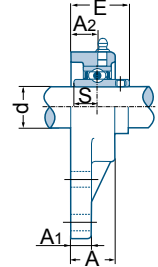
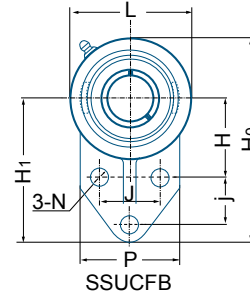




SSUCFB 204-12



Unit No.	Shaft Dia. d		Dimensions (in) Dimensions (mm)													Bearing	Housing	Mass	
	in	mm	H0	H1	L	P	H	j	J	A	A1	A2	N	E	S	No.	No.	kg	lbs
SSUCFB 201		12														SUC 201			
201-8	1/2															201-8			
202-9	9/16		4-1/4	3	2-1/2	2-3/8	1-11/16	7/8	1-1/2	1	5/16	5/8	25/64	1-11/32	1/2	202-9	SFB 204	0,6	1,3
202		15														202			
202-10	5/8															202-10			
203		17														203			
204-12	3/4		108,0	76,2	63,5	60,5	42,9	22,2	38,1	25,4	8,0	15,9	10,0	34,0	12,7	204-12			
204		20														204			
SSUCFB 205-14	7/8		4-3/4	3-3/8	2-3/4	2-1/2	1-13/16	1-1/8	1-5/8	1-1/8	3/8	11/16	25/64	1-1/2	9/16	SUC 205-14	SFB 205	1,0	2,1
205-15	15/16															205-15			
205		25	120,7	85,73	70,0	63,5	46,0	28,6	41,3	28,5	9,5	17,5	10,0	38,0	14,3	205			
205-16	1															205-16			
SSUCFB 206-18	1-1/8		5-3/8	3-3/4	3-1/4	2-3/4	2-1/16	1-1/4	1-7/8	1-1/4	3/8	3/4	25/64	1-5/8	5/8	SUC 206-18	SFB 206	1,4	3,0
206		30														206			
206-19	1-3/16		136,5	95,25	82,5	70,0	52,4	31,8	47,6	32,0	9,5	19,1	10,0	41,5	15,9	206-19			
206-20	1-1/4															206-20			
SSUCFB 207-20	1-1/4		6-1/8	4-1/4	3-3/4	3-1/4	2-3/8	1-1/4	2	1-7/16	1/2	7/8	33/64	1-7/8	11/16	SUC 207-20	SFB 207	1,4	3,1
207-21	1-5/16															207-21			
207-22	1-3/8															207-22			
207		35	155,6	108,0	95,5	82,5	60,3	31,8	50,8	36,5	13,0	22,0	13,0	48,0	17,5	207			
207-23	1-7/16															207-23			

Other sizes could be available upon request. Minimum quantity may apply.  
Please refer to page 45 for setscrew maximum torque informations.