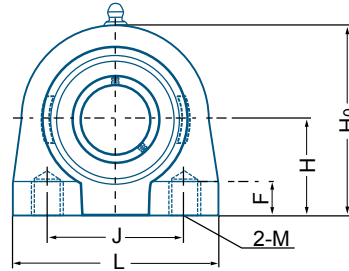


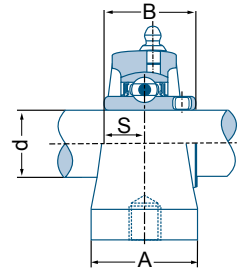
## SSUCPA\_A Series



SSUCPA 204-12A



SSUCPA\_A



Unit No.	Shaft Dia. d		Dimensions (in) Dimensions (mm)									Bearing No.	Housing No.	Mass	
	in	mm	H	L	J	A	H0	B	S	F	M			kg	lbs
SSUCPA 201A		12										SUC 201 201-8 202 202-10 203 204-12 204	SPA 204A	0,8	1,8
201-8A	1/2		1-5/16	2-3/4	2	1-1/2	2-9/16	1-7/32	23/32	1/2					
202A		15													
202-10A	5/8										3/8-16 NC				
203A		17													
204-12A	3/4		33,3	69,9	50,8	38,0	65,0	31,0	18,5	12,5					
204A		20													
SSUCPA 205-14A	7/8		1-7/16	3	2	1-1/2	2-13/16	1-3/8	13/16	1/2		SUC 205-14 205-15 205 205-16	SPA 205A	0,9	2,0
205-15A	15/16										3/8-16 NC				
205A		25	36,5	76,2	50,8	38,0	71,5	35,0	20,5	12,5					
205-16A	1														
SSUCPA 206-18A	1-1/8		1-11/16	4	3	1-1/2	3-13/32	1-1/2	7/8	5/8		SUC 206-18 206 206-19 206-20	SPA 206A	1,6	3,5
206A		30									7/16-14 NC				
206-19A	1-3/16		42,9	101,5	76,2	38,0	86,5	38,0	22,0	16,0					
206-20A	1-1/4														
SSUCPA 207-20A	1-1/4		1-7/8	4-1/4	3-1/4	1-7/8	3-3/4	1-11/16	1	3/4		SUC 207-20 207-21 207-22 207 207-23	SPA 207A	2,1	4,5
207-21A	1-5/16										1/2-13 NC				
207-22A	1-3/8														
207A		35	47,6	108,0	82,6	47,5	95,5	43,0	25,5	19,0					
207-23A	1-7/16														
SSUCPA 208-24A	1-1/2		1-15/16	4-5/8	3-1/2	1-7/8	3-15/16	1-15/16	1-3/16	3/4		SUC 208-24 208-25 208	SPA 208A	2,7	6,0
208-25A	1-9/16										1/2-13 NC				
208A		40	49,2	117,5	88,9	47,5	100,0	49,0	30,0	19,0					
SSUCPA 209-26A	1-5/8		2-1/8	5	3-3/4	2	4-1/4	1-15/16	1-3/16	3/4		SUC 209-26 209-27 209-28 209	SPA 209A	3,0	6,5
209-27A	1-11/16										1/2-13 NC				
209-28A	1-3/4		54,0	127	95,3	51,0	108,0	49,0	30,0	19,0					
209A		45													
SSUCPA 210-30A	1-7/8		2-1/4	5-1/2	4	2	5-5/8	2-1/32	1-9/32	7/8		SUC 210-30 210-31 210 210-32	SPA 210A	3,6	8,0
210-31A	1-15/16										5/8-11 NC				
210A		50	57,2	132,0	101,6	51,0	117,5	51,5	325	22,0					
210-32A	2														

Other sizes could be available upon request. Minimum quantity may apply.  
Please refer to page 45 for setscrew maximum torque informations.