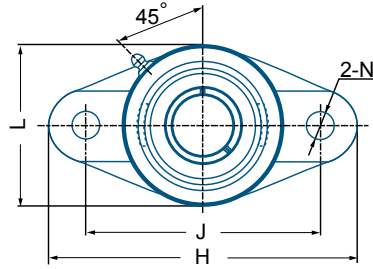


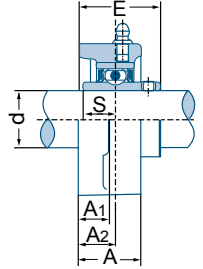
## SSUCFL Series



SSUCFL 205-16



SSUCFL



Unit No.	Shaft Dia. d		Dimensions (in) Dimensions (mm)									Bolt Size	Bearing No.	Housing No.	Mass		
	in	mm	H	J	A2	A1	A	N	L	E	S				kg	lbs	
SSUCFL 201		12															
201-8	1/2																
202		15	4-7/16	3-35/64	19/32	7/16	1	15/32	2-3/8	1-5/16	0,500	3/8	SUC 201-8				
202-10	5/8												SUC 202	SFL 204	0,5	1,1	
203		17											SUC 203				
204-12	3/4		113	90,1	15	11	25,4	12	60,3	33,3	12,7	M10	SUC 204-12				
204		20											SUC 204				
SSUCFL 205-14	7/8		5-1/8	3-57/64	5/8	1/2	1-1/16	5/8	2-11/16	1-13/32	0,563	1/2	SUC 205-14				
205-15	15/16												SUC 205-15	SFL 205	0,6	1,3	
205		25	130	98,8	16	13	27,0	16	68,3	35,8	14,3	M14	SUC 205				
205-16	1												SUC 205-16				
SSUCFL 206-18	1-1/8		5-13/16	4-39/64	45/64	1/2	1-7/32	5/8	3-5/32	1-37/64	0,626	1/2	SUC 206-18				
206		30											SUC 206	SFL 206	0,9	2,0	
206-19	1-3/16		148	117,1	18	13	31	16	80,2	40,2	15,9	M14	SUC 206-19				
206-20	1-1/4												SUC 206-20				
SSUCFL 207-20	1-1/4		6-11/32	5-1/8	3/4	19/32	1-11/32	5/8	3-17/32	1-3/4	0,689	1/2	SUC 207-20				
207-21	1-5/16												SUC 207-21				
207-22	1-3/8												SUC 207-22	SFL 207	1,2	2,6	
207		35	161	130,2	19	15	34,1	16	89,7	44,4	17,5	M14	SUC 207				
207-23	1-7/16												SUC 207-23				
SSUCFL 208-24	1-1/2		6-7/8	5-43/64	53/64	19/32	1-13/32	5/8	3-15/16	2-1/64	0,748	1/2	SUC 208-24				
208-25	1-9/16												SUC 208-25	SFL 208	1,6	3,5	
208		40	175	144,1	21	15	35,7	16	100,0	51,2	19	M14	SUC 208				
SSUCFL 209-26	1-5/8		7-13/32	5-53/64	55/64	5/8	1-1/2	3/4	4-1/4	2-1/16	0,748	5/8	SUC 209-26				
209-27	1-11/16												SUC 209-27	SFL 209	1,9	4,2	
209-28	1-3/4		188	148,0	22	16	38,1	19	108,0	52,2	19	M16	SUC 209-28				
209		45											SUC 209				
SSUCFL 210-30	1-7/8		7-3/4	6-3/16	55/64	5/8	1-9/16	3/4	4-17/32	2-5/32	0,748	5/8	SUC 210-30				
210-31	1-15/16												SUC 210-31	SFL 210	2,2	4,9	
210		50	197	157,2	22	16	39,7	19	115,1	54,6	19	M16	SUC 210				
210-32	2												SUC 210-32				
SSUCFL 211-32	2		8-13/16	7-1/4	63/64	23/32	1-11/16	3/4	5-1/8	2-19/64	0,874	5/8	SUC 211-32				
211-34	2-1/8												SUC 211-34	SFL 211	3,1	6,8	
211		55	224	184,2	25	18	42,9	19	130,2	58,4	22,2	M16	SUC 211				
211-35	2-3/16												SUC 211-35				
SSUCFL 212-36	2-1/4		9-27/32	7-61/64	1-9/64	23/32	1-7/8	29/32	5-1/2	2-45/64	1,000	3/4	SUC 212-36				
212		60											SUC 212	SFL 212	4,0	8,8	
212-38	2-3/8		250	202,0	29	18	47,6	23	139,7	68,7	25,4	M20	SUC 212-38				
212-39	2-7/16												SUC 212-39				

Other sizes could be available upon request. Minimum quantity may apply.  
Please refer to page 45 for setscrew maximum torque informations.